

# REGIONAL ECOSYSTEM MAP

Lot 5 Plan RP179460 Requested By: EPARKER@BIGPOND.NET.AU

Date: 06 Mar 05 Time: 14.04.06



Geocentric Datum of Australia 1994 : Albers Equal Area Projection

## 2001 Remnant endangered regional ecosystem

- Dominant
- Sub-dominant

## 2001 Remnant of concern regional ecosystem

- Dominant
- Sub-dominant

## 2001 Remnant not of concern regional ecosystem

- Non-remnant
- Plantation Forest
- Dam or Reservoir

Map amendment area

Roads  
© MapInfo Australia Pty Ltd 2003

Bioregions of Queensland

National Park, Conservation Area State Forest and other reserves

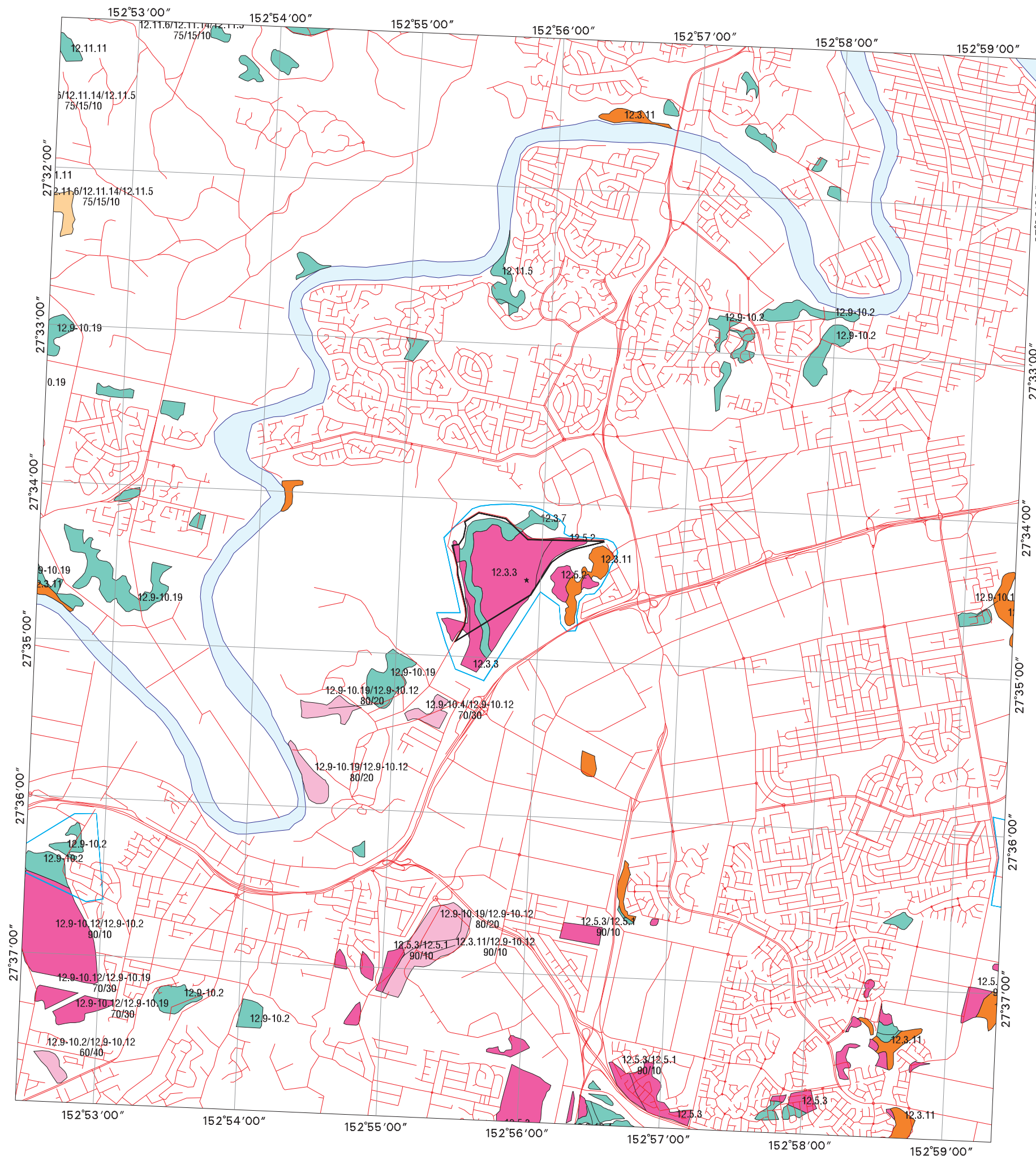
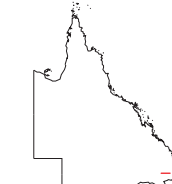
Cadastre line  
The maximum spatial error of parcels extracted for this map from the Digital Cadastral Data Base(DCDB) range from: 14m to 251m at a 95% confidence level. Property boundaries shown on this map are provided as a locational aid only. Digital Cadastral Data Base data reproduced with permission of NR&M.

Towns

Note: If you plan to clear or modify any regional ecosystem, please contact your local Department of Natural Resources and Mines Office before starting any work. To obtain a Certified RE Map for this area, please contact the Department of Natural Resources and Mines.

See page 2 for disclaimers and map notes.

### LOCALITY DIAGRAM



## ***Disclaimers and Map Notes***

This map shows the current distribution and status of regional ecosystem (RE) as listed in the schedule of the Vegetation Management Regulation (2000). Regional ecosystem mapping is compiled at a map scale of 1:100,000 except for some areas in Southeast Queensland where 1:50,000 scale mapping is available. At a map scale of 1:100,000 regional ecosystem linework should be used as a guide only. The positional accuracy at this scale is 100 metres.

Information presented on this product is distributed by the Queensland Government as an information source only. While every care is taken to ensure the accuracy of this data, the State of Queensland, and MapInfo Australia Pty Ltd, makes no statements, representations or warranties about the accuracy, reliability, completeness or suitability of any information contained in this product. The State of Queensland disclaims all responsibility for information contained in this product and all liability (including without limitation, liability in negligence) for all expenses, losses, damages and costs you may incur as a result of the information being inaccurate or incomplete in any way for any reason.

Department of Natural Resources and Mines distributes some of the materials presented in these web pages. The Department of Natural Resources and Mines gives no warranty in relation to the data (including accuracy, reliability, completeness or suitability) and no liability accepted (including without limitation, liability in negligence) for any loss, damage or costs (including consequential damage) relating to any use of the data.

Data must not be used for direct marketing or be used in breach of the privacy laws.

External contributors of data for this map are listed below:

Queensland Department of Natural Resources and Mines  
MapInfo Australia Pty Ltd.